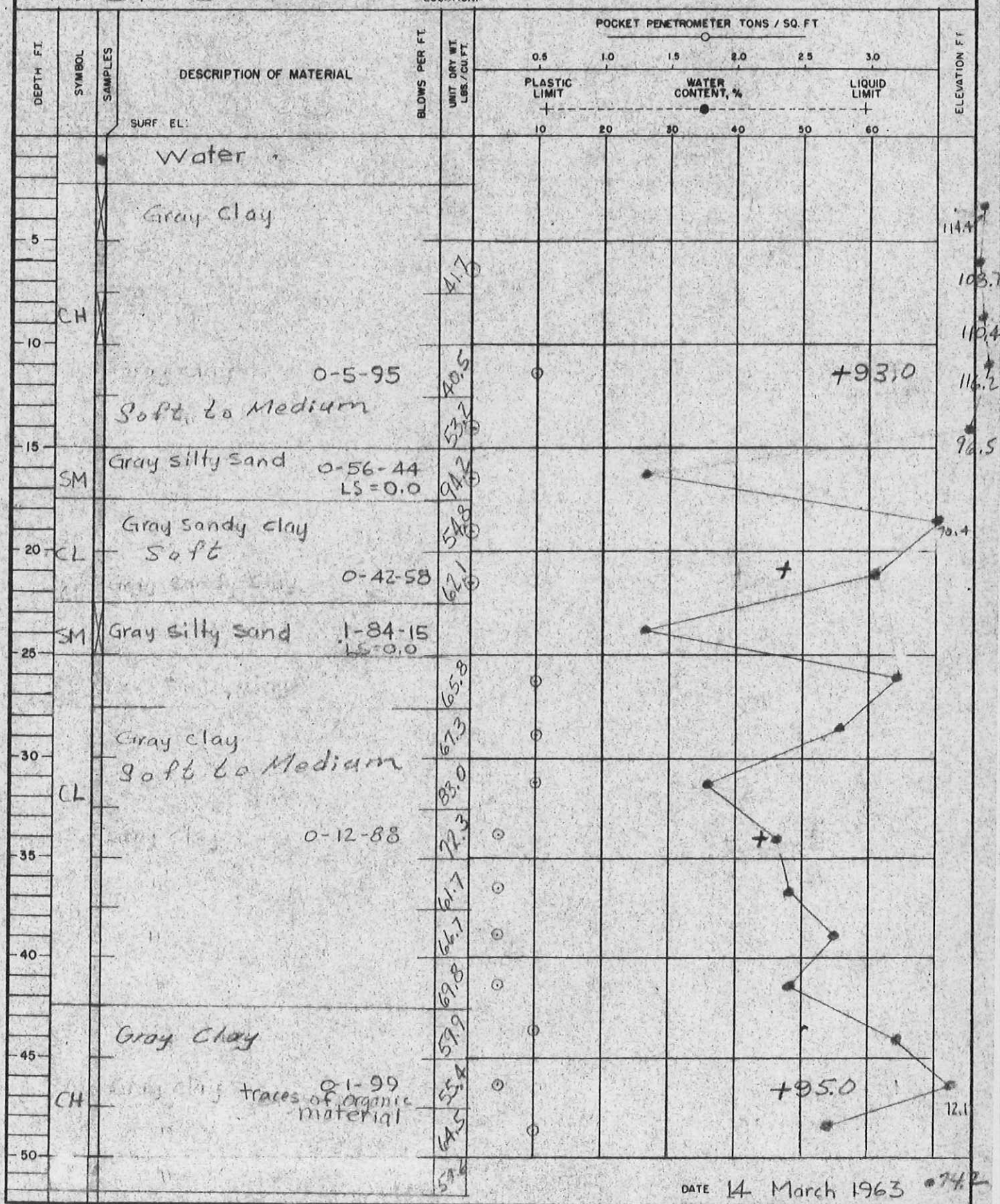


# Sabine Pass Anchorage Basin

LOG OF BORING NO. 3 ST-16

TYPE: 3 IN. SHELBY TUBE

LOCATION:



DATE 14 March 1963

SWN 266(C) Completion Depth: 52'  
22 AUG 62 Date: 26 Feb. 1963

DEPARTMENT OF THE ARMY DIVISION <u>Southwestern</u> INSTALLATION <u>Galv Dist, Eng Div</u>			1. PROJECT <b>Sabine Pass - Anchorage Basin</b>		SHEET <u>      </u> OF <u>      </u>	
<b>DRILLING LOG</b>			2. LOCATION (Coordinates or Station) <u>Tide +0.9 @ 2:00 PM</u> <u>Tide -5/10 @ 8:30 AM Tide +0.5" @ 12:30 PM</u>			
4. HOLE NO. (As shown on drawing title and file No.) <b>3ST-16</b>			3. DRILLING AGENCY <b>U. S. Army Corps of Engineers</b>			
5. NAME OF DRILLER <b>Smith</b>			6. DIRECTION OF HOLE <input type="checkbox"/> VERTICAL <input type="checkbox"/> INCLINED    DEGREES WITH VERTICAL <u>      </u>			
7. THICKNESS OF OVER-BURDEN <u>      </u>			8. DEPTH DRILLED INTO ROCK <u>      </u>		9. TOTAL DEPTH OF HOLE <b>52.0</b>	
10. SIZE AND TYPE OF BIT <b>Shelby Tube - 3"</b>			11. DATUM FOR ELEVATION SHOWN (TBM or MSL) <u>      </u>		12. MANUFACTURER'S DESIGNATION OF DRILL <u>      </u>	
13. TOTAL NO. OF OVERBURDEN SAMPLES TAKEN DISTURBED <b>3 Jars</b> UNDISTURBED <b>17 Cont</b>			14. TOTAL NO. CORE BOXES <u>      </u>		15. ELEVATION GROUND WATER <u>      </u>	
16. DATE HOLE STARTED <b>26 Feb</b> COMPLETED <b>26 Feb 1963</b>			17. ELEVATION TOP OF HOLE <u>      </u>			
18. TOTAL CORE RECOVERY FOR BORING (%) <u>      </u>			19. SIGNATURE OF INSPECTOR <u>      </u>			
ELEVATION	DEPTH	LEGEND	CLASSIFICATION OF MATERIALS (Description)	% CORE RECOVERY	BOX OR SAMPLE NO.	REMARKS (Drilling time, water loss, depth of weathering, etc., if significant)
0.0	2.3		No sample, water			
2.3	5.0		Gray slightly clay, large shell, v/soft			Jar 1
5.0	7.5		Same as above, shell, v/soft			Cont. 1
7.5	10.0		Gray silty clay, v/soft			Jar 2
10.0	12.5		Gray soft, clay, soft			Cont. 2      0.5
12.5	15.0		12.5-13.5 Same as above 13.5-15.0 Gray clayey sand fine broken shell, v/soft			Cont. 3
15.0	17.5		Gray clayey sand, fine broken shell, v/soft			Cont. 4
17.5	20.0		Gray sandy clay, fine broken shell, v/soft			Cont. 5
20.0	22.5		Same as above, v/soft			Cont. 6
22.5	25.0		Gray clayey sand, fine and shell, v/soft			Jar 3
25.0	27.5		Gray sandy clay, shell v/soft			Cont. 7
27.5	30.0		Same as above, med			Cont. 8      0.5
30.0	32.5		Gray sandy clay broken shell med			Cont. 9      0.5
32.5	35.0		Same as above, sand seams soft			Cont. 10      0.25
35.0	37.5		Gray clay broken shell soft			Cont. 11      0.25
37.5	40.0		Gray clay, soft			Cont. 12      0.25
40.0	42.5		Gray clay, soft			Cont. 13      0.25
42.5	45.0		Gray clay traces of wood med			Cont. 14      .5
45.0	47.5		Same as above, soft			Cont. 15      0.25
47.5	50.0		Gray clay fat, med			Cont. 16      .5
50.0	52.0		Light gray clay, v/soft			Cont. 17
			Bottomed in above Water 2.3 Weight of hammer 140# Drop Distance - 30"			