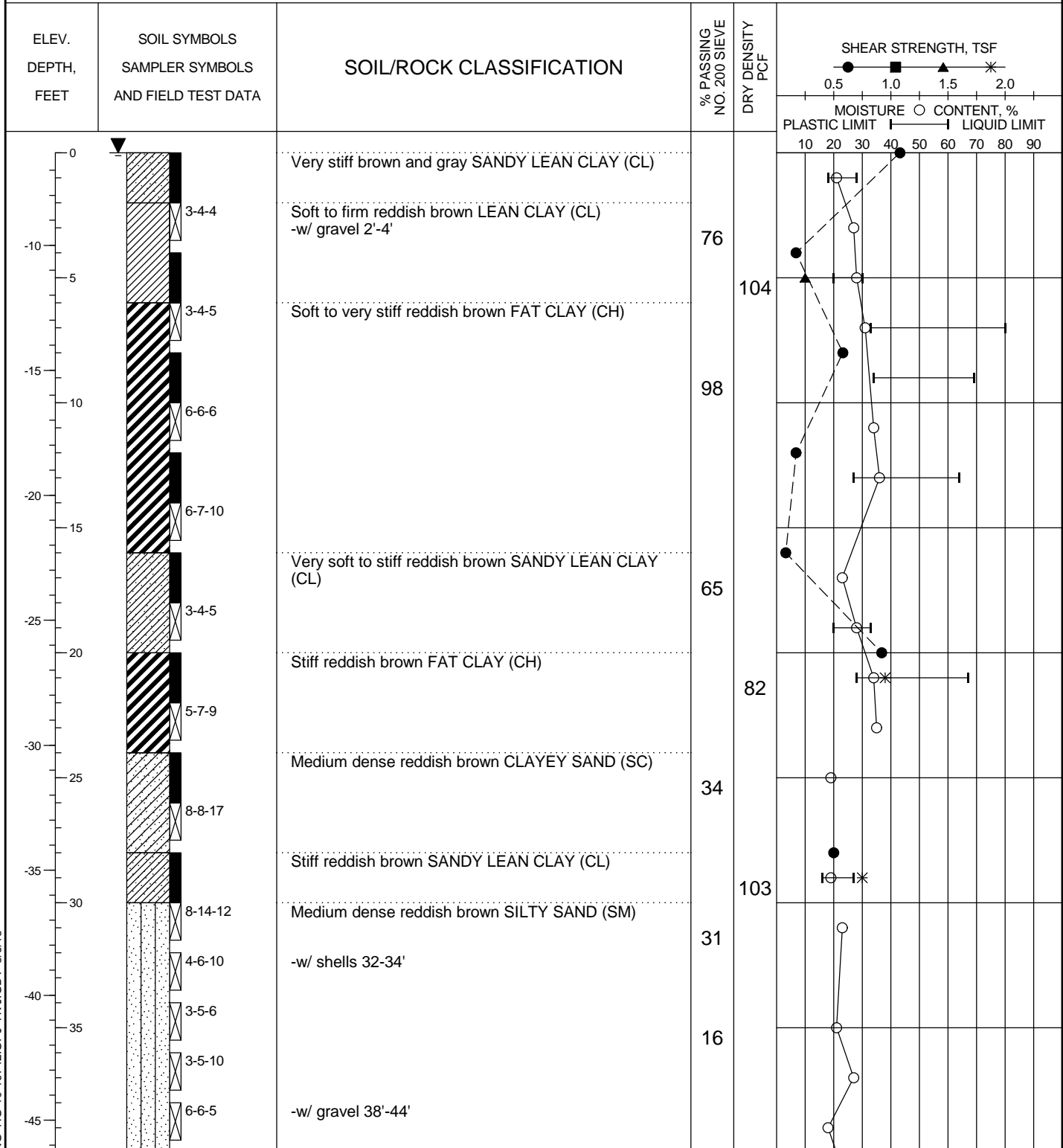


LOG OF BORING

Project: Bayport Ship Channel Phase 2
 Boring No.: 12-59 (Depth of Water = 8 feet)
 Groundwater during drilling: 0 feet
 Groundwater after drilling: ---

Date: 11/29/2012
 Northing: 13,792,322.4
 Easting: 3,232,971.8

Project No.: HG1019742
 Elevation (MLT): -6.3 feet
 Station: 40+19.82
 Range: -293.46



Shear Types: ● = Hand Penet. ■ = Torvane ▲ = Unconf. Comp. * = UU Triaxial

See Plate 2 for boring location.

PLATE A-1a

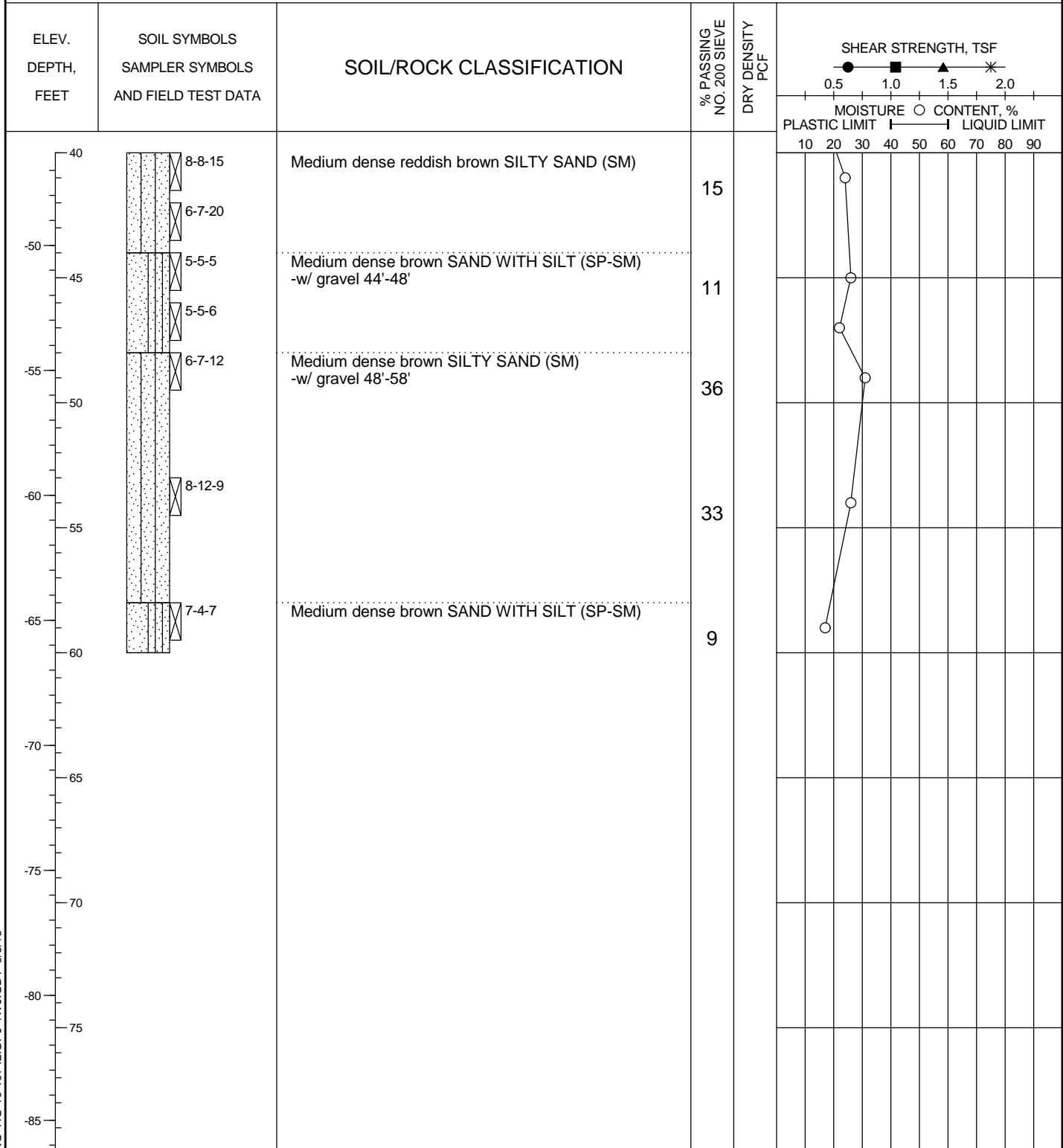
LOG OF SOIL BORING HG-10-19742.GPJ HVJ.GDT 3/5/13

LOG OF BORING

Project: Bayport Ship Channel Phase 2
 Boring No.: 12-59 (Depth of Water = 8 feet)
 Groundwater during drilling: 0 feet
 Groundwater after drilling: ---

Date: 11/29/2012
 Northing: 13,792,322.4
 Easting: 3,232,971.8

Project No.: HG1019742
 Elevation (MLT): -6.3 feet
 Station: 40+19.82
 Range: -293.46



Shear Types: ● = Hand Penet. ■ = Torvane ▲ = Unconf. Comp. * = UU Triaxial

See Plate 2 for boring location.

PLATE A-1b

LOG OF SOIL BORING HG-10-19742.GPJ HVJ.GDT 3/5/13

