

# LOG OF BORING

Project: Bayport Ship Channel Phase 2

Boring No.: 12-63 (Depth of Water = 5.6 feet)

Groundwater during drilling: 0 feet

Groundwater after drilling: ---

Date: 12/4/2012

Northing: 13,792,636.2

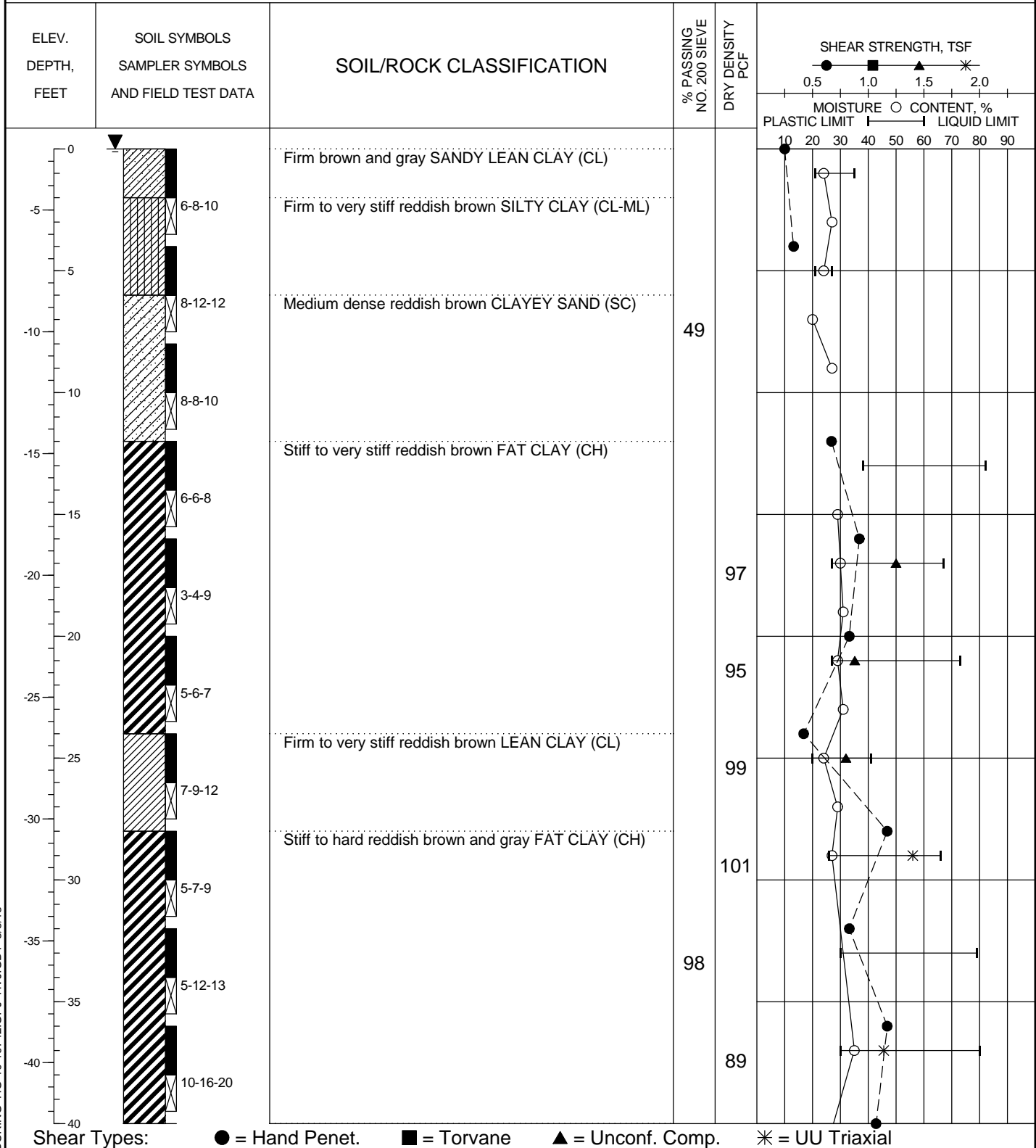
Easting: 3,238,117.7

Project No.: HG1019742

Elevation (MLT): -2.5 feet

Station: 91+75.17

Range: -329.62



See Plate 2 for boring location.

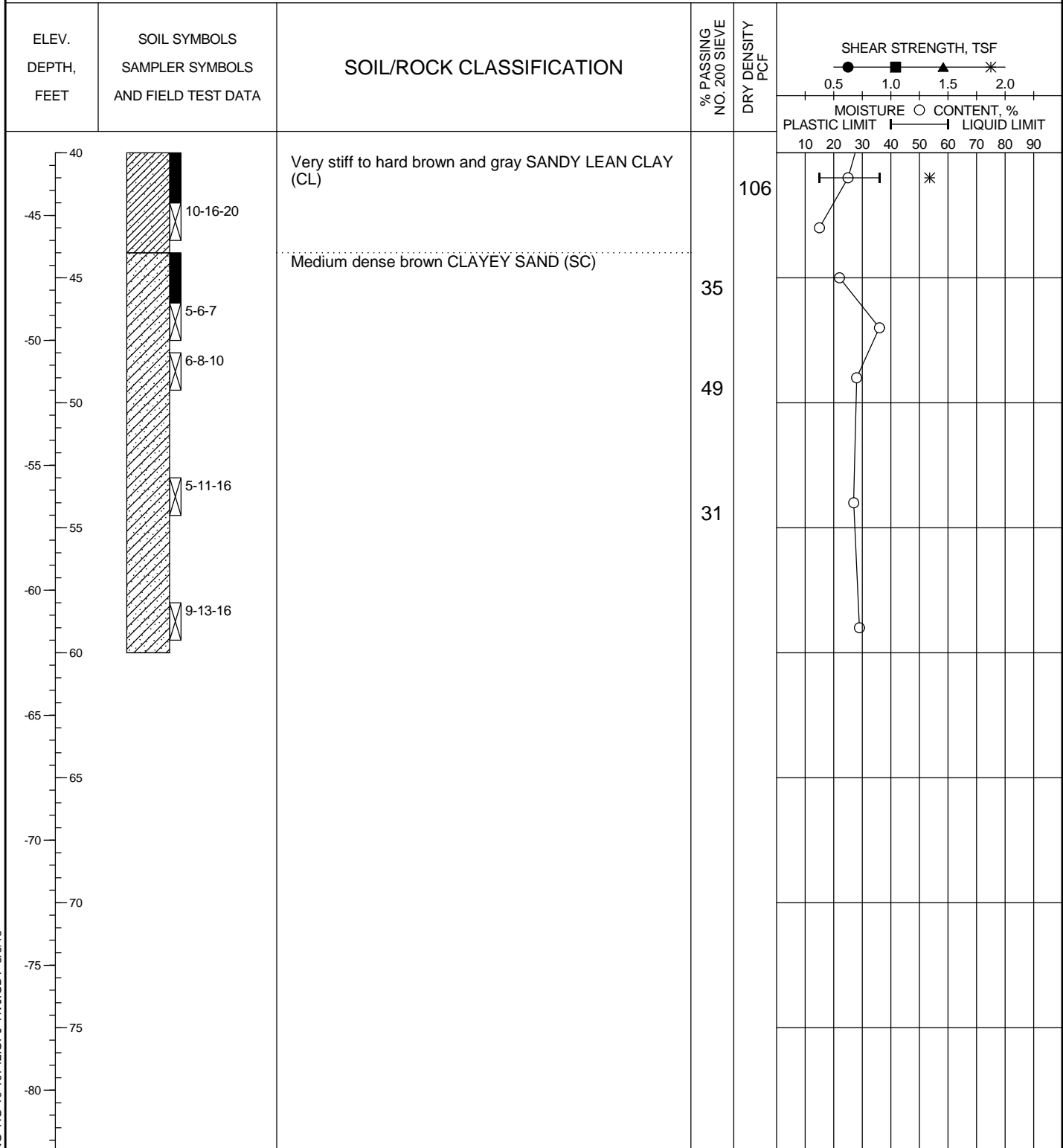
PLATE A-5a

# LOG OF BORING

Project: Bayport Ship Channel Phase 2  
 Boring No.: 12-63 (Depth of Water = 5.6 feet)  
 Groundwater during drilling: 0 feet  
 Groundwater after drilling: ---

Date: 12/4/2012  
 Northing: 13,792,636.2  
 Easting: 3,238,117.7

Project No.: HG1019742  
 Elevation (MLT): -2.5 feet  
 Station: 91+75.17  
 Range: -329.62



Shear Types: ● = Hand Penet. ■ = Torvane ▲ = Unconf. Comp. \* = UU Triaxial

See Plate 2 for boring location.

PLATE A-5b

LOG OF SOIL BORING HG-10-19742.GPJ HVJ.GDT 3/5/13

