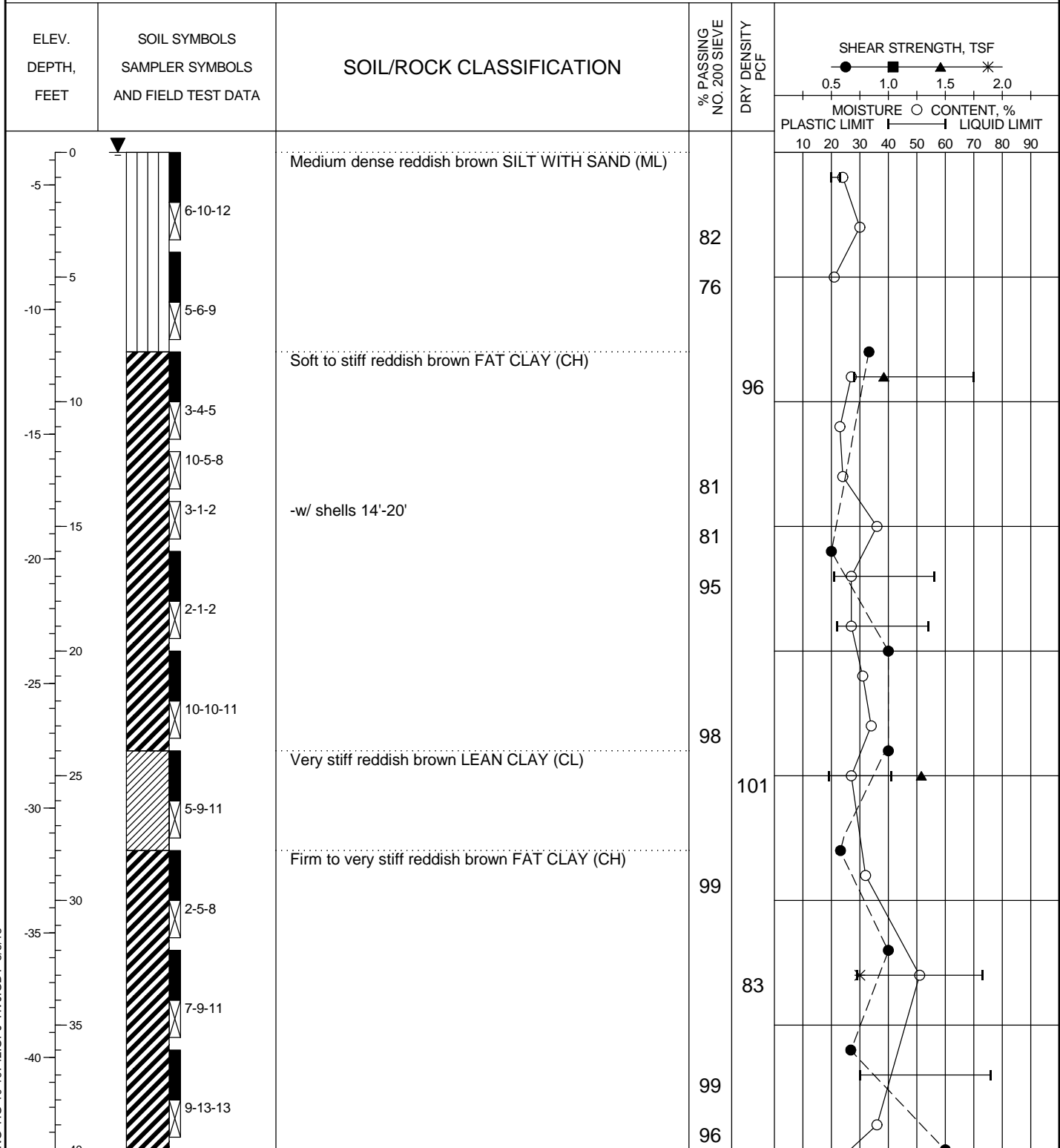


LOG OF BORING

Project: Bayport Ship Channel Phase 2
 Boring No.: 12-65 (Depth of Water = 6.4 feet)
 Groundwater during drilling: 0 feet
 Groundwater after drilling: ---

Date: 12/6/2012
 Northing: 13,792,677.0
 Easting: 3,239,947.5

Project No.: HG1019742
 Elevation (MLT): -3.7 feet
 Station: 110+04.53
 Range: -271.76



Shear Types: ● = Hand Penet. ■ = Torvane ▲ = Unconf. Comp. * = UU Triaxial

See Plate 2 for boring location.

PLATE A-7a

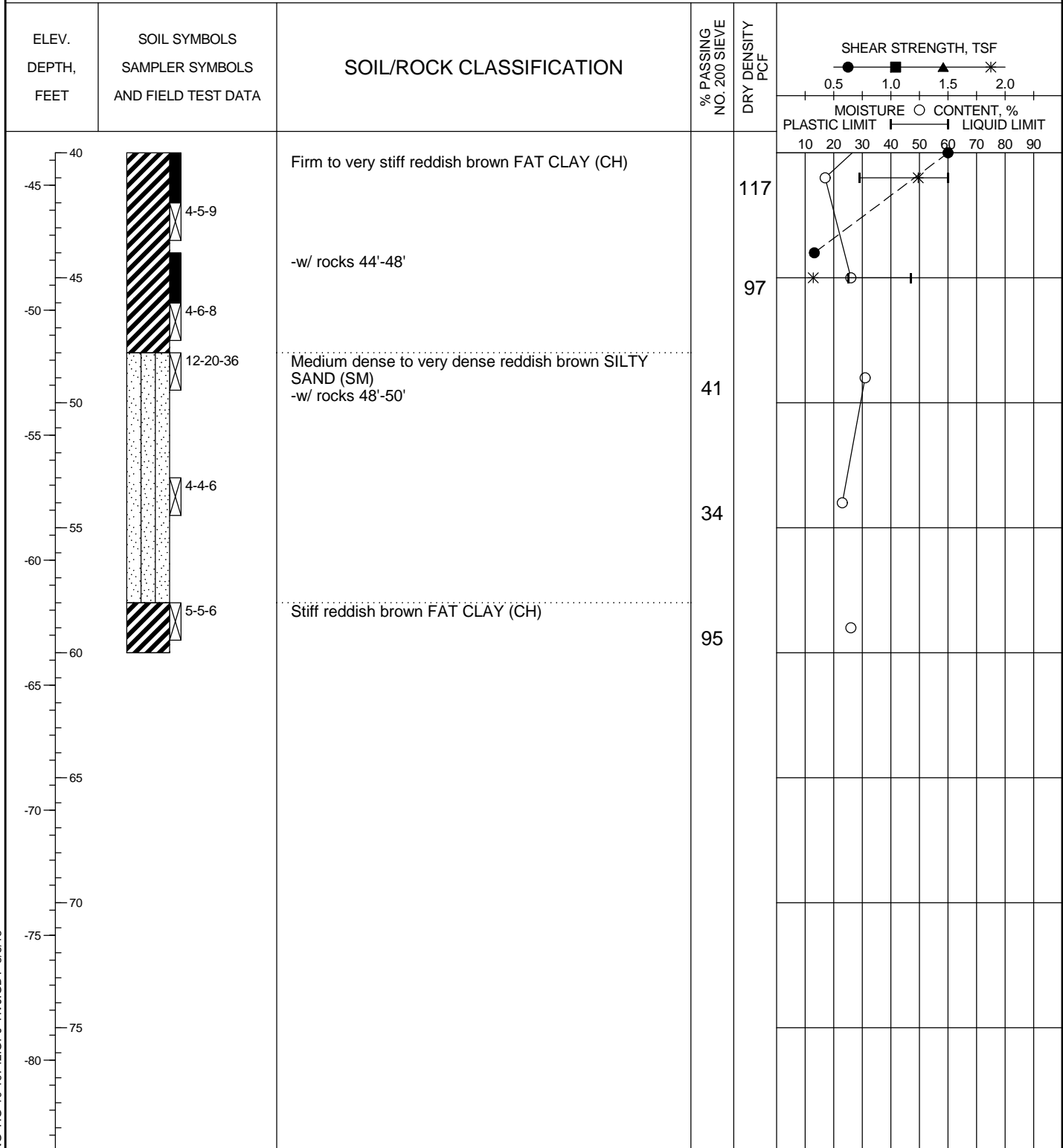
LOG OF SOIL BORING HG-10-19742.GPJ HVJ.GDT 3/5/13

LOG OF BORING

Project: Bayport Ship Channel Phase 2
 Boring No.: 12-65 (Depth of Water = 6.4 feet)
 Groundwater during drilling: 0 feet
 Groundwater after drilling: ---

Date: 12/6/2012
 Northing: 13,792,677.0
 Easting: 3,239,947.5

Project No.: HG1019742
 Elevation (MLT): -3.7 feet
 Station: 110+04.53
 Range: -271.76



Shear Types: ● = Hand Penet. ■ = Torvane ▲ = Unconf. Comp. * = UU Triaxial

See Plate 2 for boring location.

PLATE A-7b

