

GULF INTRACOASTAL WATERWAY
 GUADALUPE RIVER, TEXAS
 CHANNEL TO VICTORIA
 MISSION LAKE TO STATE HIGHWAY NO. 35

TABLE 1

UNCONFINED COMPRESSION TESTS

Hole No.	Sample Depth Feet	Density Data		Unconfined Comp. Str. Tons/S.F.	Atterberg Limits		Bar L.S.	Sieve Analysis			Classification
		M.C. %	MDW #/cf		LL	PL		Gr	Sa	Fines	
4A-24	1.0-2.5	36	85	0.48	53	19	16	0	3	97	Dark Gray Clay, (CH), Soft
	2.5-5.0	37	85	0.64	54	-	17	0	9	91	Dark Gray Clay, (CH), Soft
	4.0-5.0	34	88	0.20	-	-	4.0	0	2	98	Light Gray Clay, (CL-ML) Very Soft
4A-25	1.0-2.0	35	88	0.51	51	-	15.5	0	5	95	Gray Clay, (CH), Soft
	2.0-3.0	35	88	0.43	52	19	16.0	0	2	98	Light Gray Clay (CH), Soft
4A-26	1.0-2.0	32	89	0.75	51	-	17.0	0	3	97	Gray Clay, (CH), Plastic
	3.0-4.0	33	89	0.19	32	-	5.0	0	5	95	Light Gray Clay, (CL) Very Soft
4A-27	1.0-2.0	41	79	0.80	63	21	20.0	0	3	97	Dark Gray Clay, (CH) Soft
	2.0-3.0	39	81	0.62	62	22	18.0	0	3	97	Dark Gray Clay, (CH) Plastic
4A-28	2.0-3.5	38	82	0.63	-	-	---	-	-	-	Dark Gray Clay (CL), Plastic
	3.5-5.5	22	105	0.24	-	-	---	-	-	-	Light Gray Clay (CL), Soft
	5.5-7.0	35	88	0.18	-	-	---	-	-	-	Light Gray Clay, (CL), Soft
	7.0-8.0	27	95	0.14	-	-	---	-	-	-	Gray Silty Sand, (SM), Very Loose
	8.0-9.0	36	84	0.10	-	-	---	-	-	-	Gray Sandy Clay, (CL), Very Soft
4A-29	2.0-4.0	31	91	0.19	-	-	---	-	-	-	Gray Sandy Clay, (CL), Soft
	4.0-5.0	54	83	0.23	-	-	---	-	-	-	Gray Silty Sand, (SM), Loose
	5.0-6.0	21	101	0.22	-	-	---	-	-	-	Gray Silty Sand, (SM), Loose
6ST-50	14.0-16.0	35	85	0.06	28	14	8.0	0	37	63	Gray Sand Clay, (CL), Very Soft
4A-58	2.0-4.0	46	74	0.05	-	-	---	-	-	-	Dark Gray Clay, (CL), Very Soft
	4.0-7.0	52	69	0.03	-	-	---	-	-	-	Dark Gray Clay, (CL), Very Soft

Table 1

Location
1

GULF INTRACOASTAL WATERWAY
 GUADALUPE RIVER, TEXAS
 CHANNEL TO VICTORIA
 MISSION LAKE TO STATE HIGHWAY NO. 35

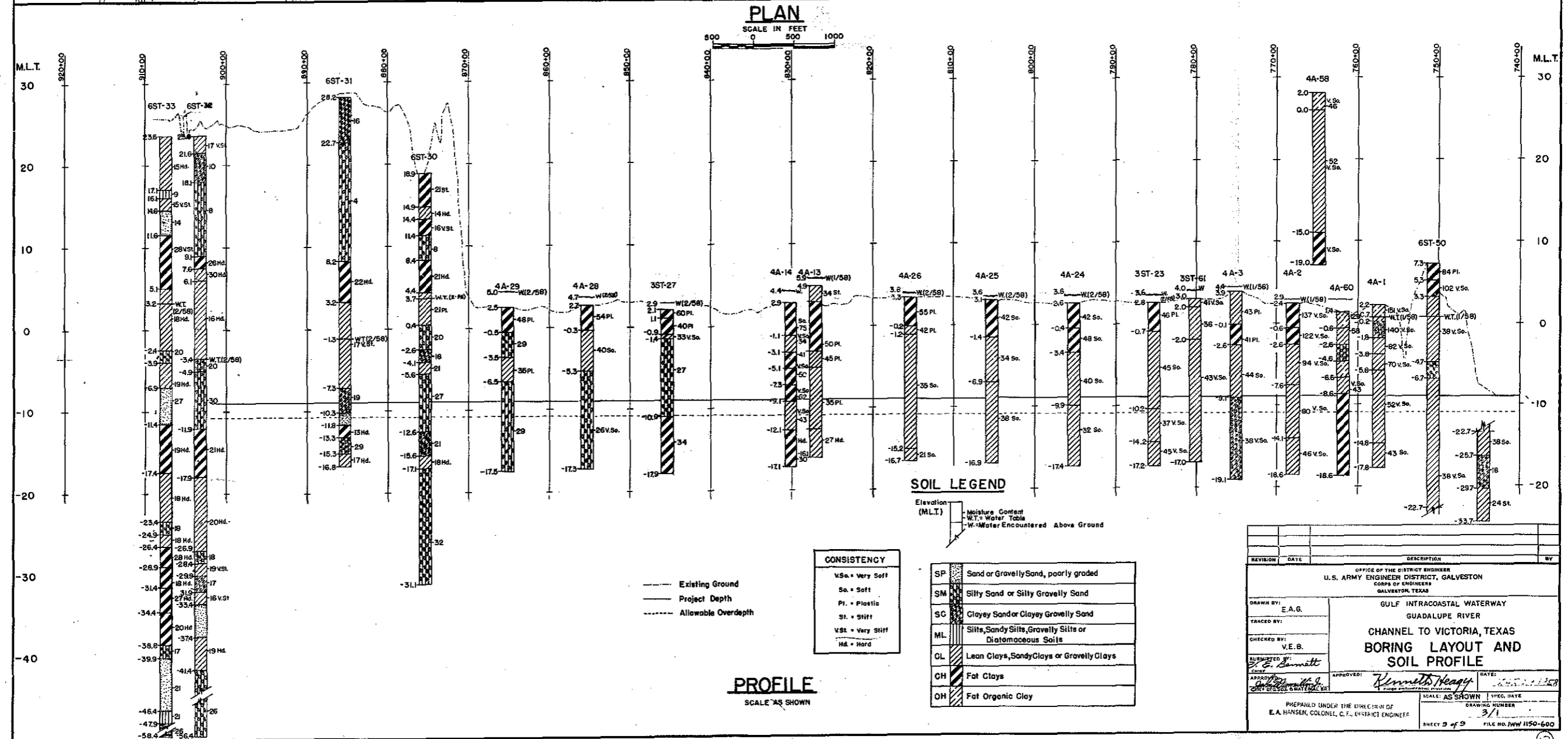
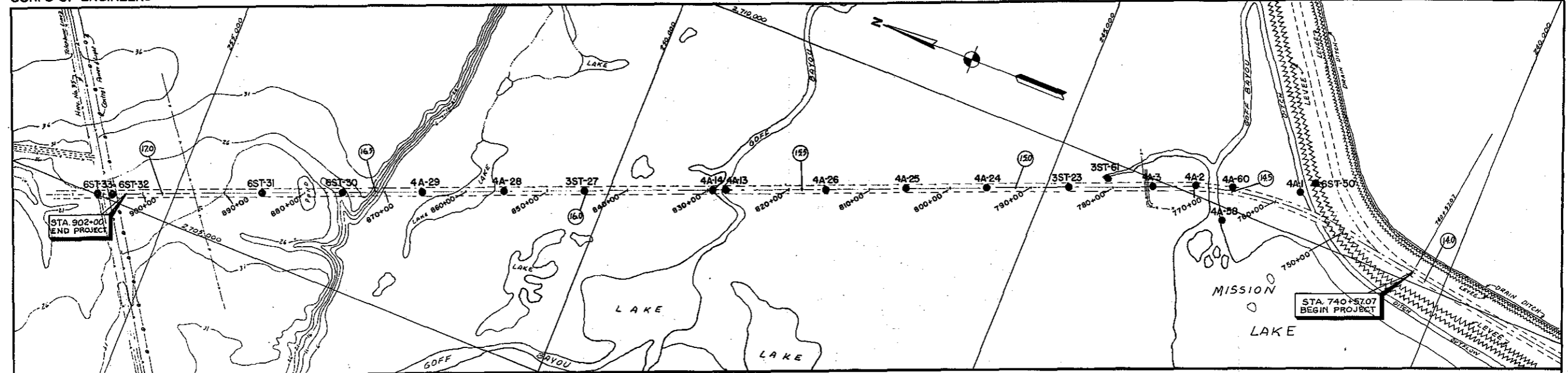
TABLE 2

DIRECT SHEAR TESTS

Hole No.	Sample Depth Feet	Density Data		Type of Test	Shear Data				Atterberg Limits		Bar L.S.	Sieve Analysis			Classification
		M.C. %	UDW #/cf		Maximum ϕ	C	Ultimate ϕ	C	LL	PL		Gr	Sa	Fines	
6ST-32	4.0-5.5	7.2	98	CD	32.8	0.00	32.8	0.00	28	12	7.0	0	65	35	Light Gray Clayey Sand, (SC), Hard
6ST-50	14.0-16.0	38	85	UU	4.2	0.15	2.9	0.15	28	14	8.0	0	37	63	Light Gray Sandy Clay, (CL), Very Soft
6ST-50	8.0-10.0	37	80	UU	3.0	0.11	3.0	0.09	32	19	9.0	0	37	63	Light Gray Sandy Clay (CL), Very Soft
6ST-50	37.0-39.0	23	102	UU	32.6	0.12	32.6	0.12	32	13	10.0	0	17	83	Gray Clay, (CL), Stiff
6ST-50	2.0-4.0	57	63	UU	7.5	0.14	7.5	0.14	62	29	16.0	0	36	64	Gray Clay, (CH), Soft

NOTE: CD - Consolidated Drained
 UU - Unconsolidated Undrained

Table 2



REVISION	DATE	DESCRIPTION	BY

OFFICE OF THE DISTRICT ENGINEER
U. S. ARMY ENGINEER DISTRICT, GALVESTON
CORPS OF ENGINEERS
GALVESTON, TEXAS

GULF INTRACOASTAL WATERWAY
GUADALUPE RIVER
CHANNEL TO VICTORIA, TEXAS
BORING LAYOUT AND
SOIL PROFILE

DRAWN BY: E. A. G.
TRACED BY:
CHECKED BY: V. E. B.
SUBMITTED BY: *St. J. Summitt*
APPROVED: *Kenneth Heagy* DATE: 11/11/58

PREPARED UNDER THE DIRECTION OF
E. A. HANSEN, COLONEL, C. E., DISTRICT ENGINEER

SCALE: AS SHOWN
DRAWING NUMBER: 3/1
SHEET 3 of 3 FILE NO. IHW 150-600