

GULF INTRACOASTAL WATERWAY
 GUADALUPE RIVER, TEXAS
 CHANNEL TO VICTORIA
 MISSION LAKE TO STATE HIGHWAY NO. 35

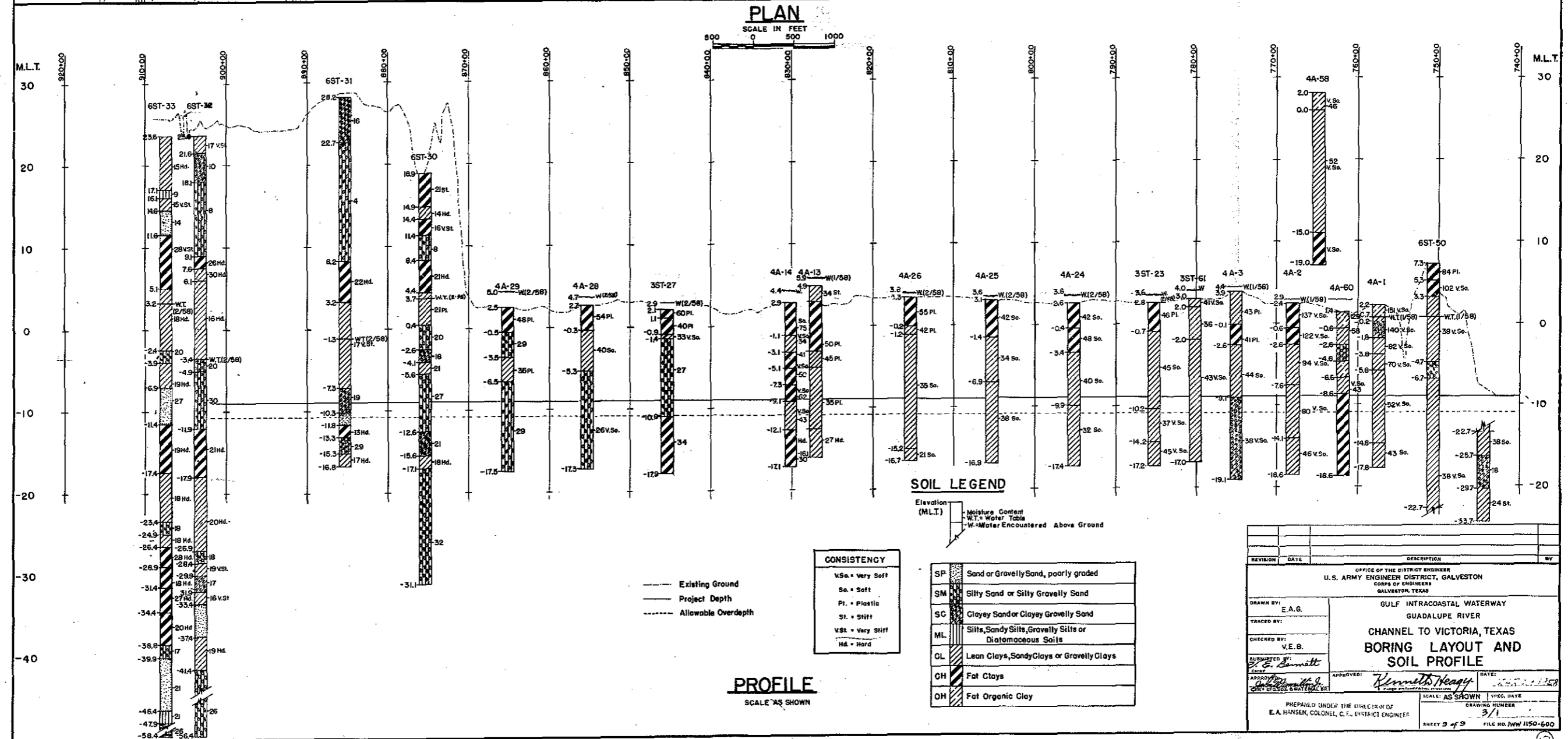
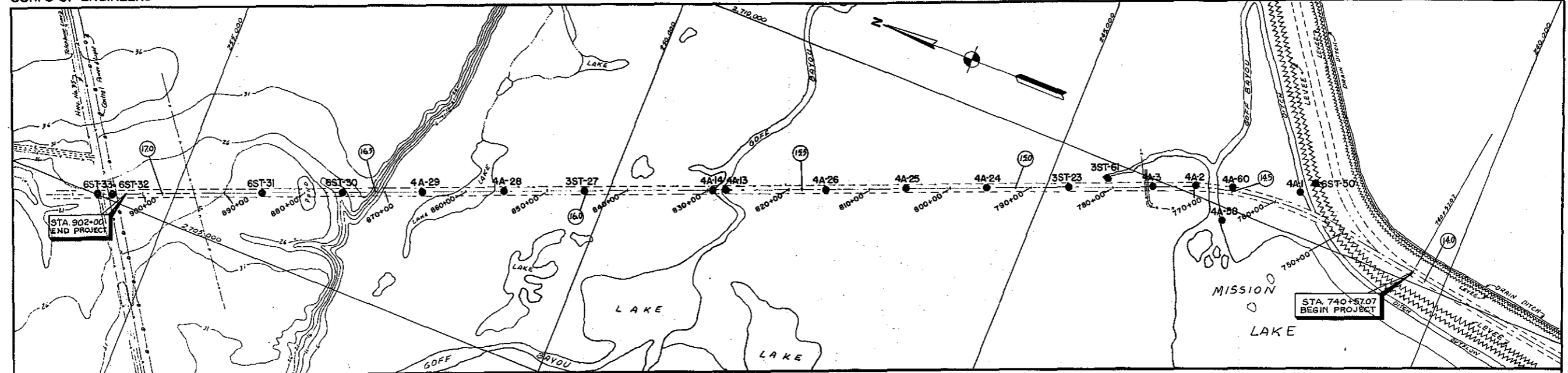
TABLE 1

UNCONFINED COMPRESSION TESTS

Hole No.	Sample Depth Feet	Density Data		Unconfined Comp. Str. Tons/S.F.	Atterberg Limits		Bar L.S.	Sieve Analysis			Classification
		M.C. %	MDW #/cf		LL	PL		Gr	Sa	Fines	
4A-24	1.0-2.5	36	85	0.48	53	19	16	0	3	97	Dark Gray Clay, (CH), Soft
	2.5-5.0	37	85	0.64	54	-	17	0	9	91	Dark Gray Clay, (CH), Soft
	4.0-5.0	34	88	0.20	-	-	4.0	0	2	98	Light Gray Clay, (CL-ML) Very Soft
4A-25	1.0-2.0	35	88	0.51	51	-	15.5	0	5	95	Gray Clay, (CH), Soft
	2.0-3.0	35	88	0.43	52	19	16.0	0	2	98	Light Gray Clay (CH), Soft
4A-26	1.0-2.0	32	89	0.75	51	-	17.0	0	3	97	Gray Clay, (CH), Plastic
	3.0-4.0	33	89	0.19	32	-	5.0	0	5	95	Light Gray Clay, (CL) Very Soft
4A-27	1.0-2.0	41	79	0.80	63	21	20.0	0	3	97	Dark Gray Clay, (CH) Soft
	2.0-3.0	39	81	0.62	62	22	18.0	0	3	97	Dark Gray Clay, (CH) Plastic
4A-28	2.0-3.5	38	82	0.63	-	-	---	-	-	-	Dark Gray Clay (CL), Plastic
	3.5-5.5	22	105	0.24	-	-	---	-	-	-	Light Gray Clay (CL), Soft
	5.5-7.0	35	88	0.18	-	-	---	-	-	-	Light Gray Clay, (CL), Soft
	7.0-8.0	27	95	0.14	-	-	---	-	-	-	Gray Silty Sand, (SM), Very Loose
	8.0-9.0	36	84	0.10	-	-	---	-	-	-	Gray Sandy Clay, (CL), Very Soft
4A-29	2.0-4.0	31	91	0.19	-	-	---	-	-	-	Gray Sandy Clay, (CL), Soft
	4.0-5.0	54	83	0.23	-	-	---	-	-	-	Gray Silty Sand, (SM), Loose
	5.0-6.0	21	101	0.22	-	-	---	-	-	-	Gray Silty Sand, (SM), Loose
6ST-50	14.0-16.0	35	85	0.06	28	14	8.0	0	37	63	Gray Sand Clay, (CL), Very Soft
4A-58	2.0-4.0	46	74	0.05	-	-	---	-	-	-	Dark Gray Clay, (CL), Very Soft
	4.0-7.0	52	69	0.03	-	-	---	-	-	-	Dark Gray Clay, (CL), Very Soft

Table 1

Location
1



REVISION	DATE	DESCRIPTION	BY

OFFICE OF THE DISTRICT ENGINEER
U. S. ARMY ENGINEER DISTRICT, GALVESTON
CORPS OF ENGINEERS
GALVESTON, TEXAS

DRAWN BY: E. A. G.
TRACED BY:
CHECKED BY: V. E. B.
SUBMITTED BY: *Robert J. Bennett*
APPROVED BY: *Kenneth Heagy* DATE: 1/11/58

GULF INTRACOASTAL WATERWAY
GUADALUPE RIVER
CHANNEL TO VICTORIA, TEXAS
BORING LAYOUT AND
SOIL PROFILE

PREPARED UNDER THE DIRECTION OF
E. A. HANSEN, COLONEL, C. E., DISTRICT ENGINEER

SCALE: AS SHOWN
DRAWING NUMBER: 3/1
SHEET 3 of 3 FILE NO. IHW 150-600