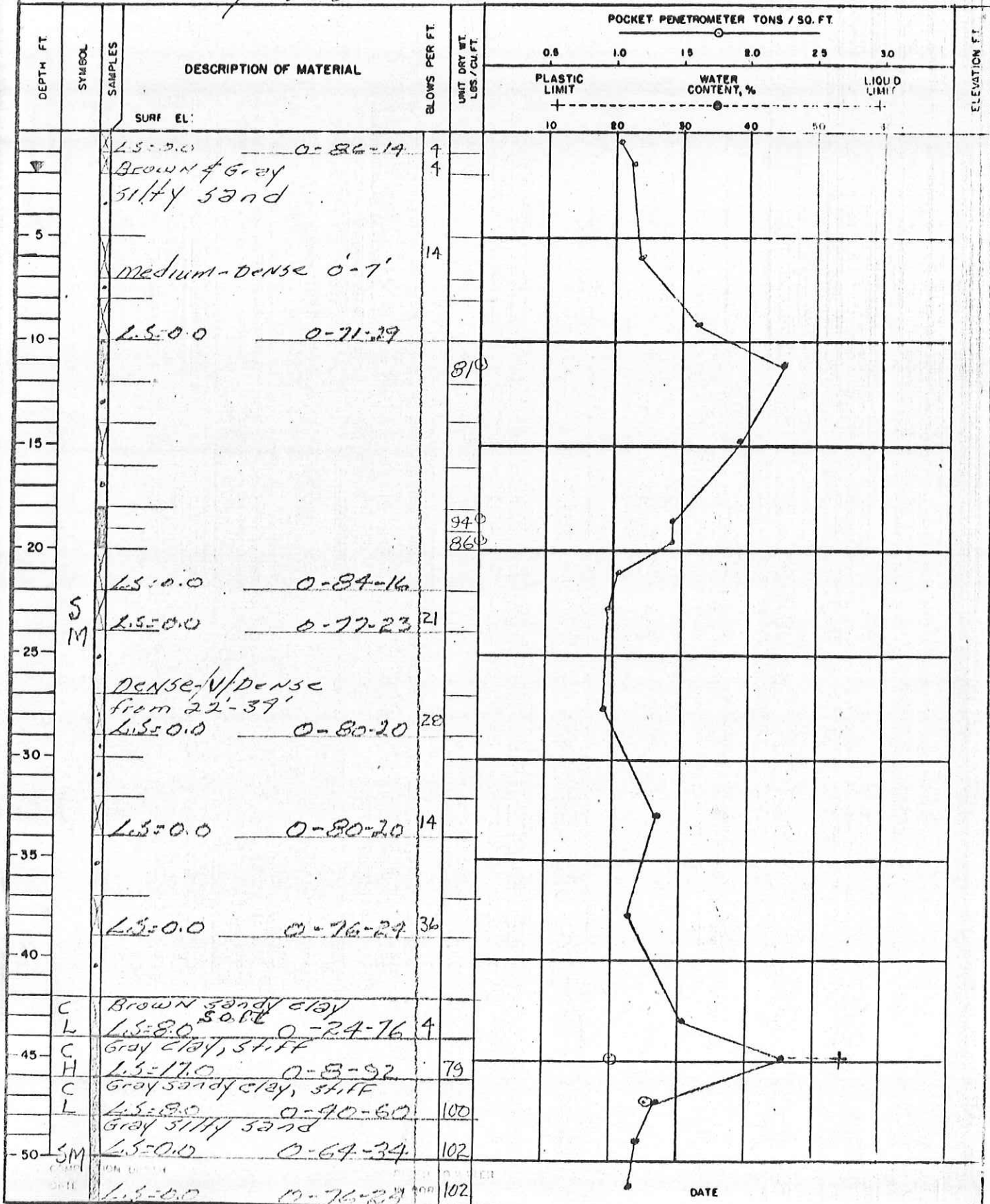


Part Arkansas
 Municipal Anchorage LOG OF BORING NO. 35T-3
 BASIN

TYPE: 3" Shelby tube

LOCATION:



SWN 266(C)
 22 AUG 62
 completion depth 52.0
 Date 23 Dec 64

35T-3

DRILLING LOG		DIVISION Southwestern	INSTALLATION Galv Dist, Eng Div	SHEET OF SHEETS
1. PROJECT <i>Port Aransas Corpus Christi Harbor Island Waterway</i>		10. SIZE AND TYPE OF BIT <i>Shelby Tube 3"</i>		
2. LOCATION (Coordinates or Station) <i>Port Aransas Anchorage Basin</i>		11. DATUM FOR ELEVATION SHOWN (TBM or MSL)		
3. DRILLING AGENCY U. S. Army Corps of Engineers		12. MANUFACTURER'S DESIGNATION OF DRILL		
4. HOLE NO. (As shown on drawing title and file number) 3ST-3		13. TOTAL NO. OF OVER-BURDEN SAMPLES TAKEN	DISTURBED 11 Jars	UNDISTURBED 7 Cont.
5. NAME OF DRILLER Watts		14. TOTAL NUMBER CORE BOXES		
6. DIRECTION OF HOLE <input type="checkbox"/> VERTICAL <input type="checkbox"/> INCLINED _____ DEG. FROM VERT.		15. ELEVATION GROUND WATER		
7. THICKNESS OF OVERBURDEN		16. DATE HOLE	STARTED 23 Dec 64	COMPLETED 23 Dec 64
8. DEPTH DRILLED INTO ROCK		17. ELEVATION TOP OF HOLE		
9. TOTAL DEPTH OF HOLE 52.0		18. TOTAL CORE RECOVERY FOR BORING %		
19. SIGNATURE OF INSPECTOR				

ELEVATION a	DEPTH b	LEGEND c	CLASSIFICATION OF MATERIALS (Description) d	% CORE RECOVERY e	BOX OR SAMPLE NO. f	REMARKS (Drilling time, water loss, depth of weathering, etc., if significant) g
0.0	1.0		Brown sand 0.0-.5 No count .5-1.0 4 blows			Jar 1 <i>gas!</i>
1.0	2.0		Gray sand 1.0-1.5 4 blows 1.5-2.0 No count			Jar 2 2.0
2.0	5.0		Same as above, washed			No sample
5.0	7.0		Gray sand, shell frag 5.0-5.5 No count 5.5-6.0 6 blows 6.0-6.5 8 blows 6.5-7.0 No count			Jar 3
7.0	8.0		Washed, same as above			No sample
8.0	10.0		Wt. of hammer & 10' rod, dewet. 2.0', gray clayey sand			Jar 4
10.0	12.0		Same as above, v/soft			Cont. 1 0.0
12.0	14.0		Gray clayey sand, no recov.			No sample
14.0	16.0		Gray sandy clay, shell frag			Jar 5
16.0	18.0		Same as above, no recov., washed			No sample
18.0	19.0		Gray sandy clay w/shell frag, v/soft			Cont. 2 0.0
19.0	20.0		Gray clayey sand, shell frag, v/soft			Cont. 3 0.0
20.0	22.0		Gray sand w/tr of shell frag.			Jar 6
22.0	24.0		Same as above 22.0-22.5 No count 22.5-23.0 8 blows 23.0-23.5 13 blows 23.5-24.0 No count			Jar 7
24.0	27.0		Gray sand, fine, washed, no recov.			No sample
27.0	29.0		Gray sand fine 27.0-27.5 No count 27.5-28.0 13 blows 28.0-28.5 15 blows 28.5-29.0 No count			Jar 8
29.0	30.0		Same as above			
30.0	32.0		Same as above, washed away			No sample

DRILLING LOG		DIVISION Southwestern	INSTALLATION Galv Dist, Eng Div	SHEET OF SHEETS
1. PROJECT Harbor Island		10. SIZE AND TYPE OF BIT Shelby Tube 3"		
2. LOCATION (Coordinates or Station) Port Aransas		11. DATUM FOR ELEVATION SHOWN (TBM or MSL)		
3. DRILLING AGENCY U. S. Army Corps of Engineers		12. MANUFACTURER'S DESIGNATION OF DRILL		
4. HOLE NO. (As shown on drawing title and file number) 3ST-3		13. TOTAL NO. OF OVER-BURDEN SAMPLES TAKEN	DISTURBED	UNDISTURBED
5. NAME OF DRILLER		14. TOTAL NUMBER CORE BOXES		
6. DIRECTION OF HOLE <input type="checkbox"/> VERTICAL <input type="checkbox"/> INCLINED _____ DEG. FROM VERT.		15. ELEVATION GROUND WATER		
7. THICKNESS OF OVERBURDEN		16. DATE HOLE	STARTED	COMPLETED
8. DEPTH DRILLED INTO ROCK		17. ELEVATION TOP OF HOLE		
9. TOTAL DEPTH OF HOLE		18. TOTAL CORE RECOVERY FOR BORING %		
		19. SIGNATURE OF INSPECTOR		

ELEVATION a	DEPTH b	LEGEND c	CLASSIFICATION OF MATERIALS (Description) d	% CORE RECOVERY e	BOX OR SAMPLE NO. f	REMARKS (Drilling time, water loss, depth of weathering, etc., if significant) g
32.0	34.0		Brown silty clayey sand 32.0-32.5 no count 32.5-33.0 6 blows 33.0-33.5 8 blows 33.5-34.0 no count			Jar 9
34.0	37.0		Same as above, washed away			No sample
37.0	39.0		Brown silty clayey sand 37.0-37.5 no count 37.5-38.0 16 blows 38.0-38.5 26 blows 38.5-39.0 no count			Jar 10
39.0	42.0		Same as above, washed away			No sample
42.0	44.0		Brown sandy clay 42.0-42.5 no count 42.5-43.0 2 blows 43.0-43.5 2 blows 43.5-44.0 no count			Jar 11
44.0	46.0		Gray sandy clay w/tr sh frag, stiff			Cont. 4 1.00
46.0	48.0		Gr to green sandy clay w/sh frag, stiff			Cont. 5 1.25
48.0	50.0		Gr to green sandy clay w/sh frag, stiff			Cont. 6 1.50
50.0	52.0		Gray sandy clay w/sh frag, soft			Cont. 7 0.25
			Bottom			
			Water table 2.0'			