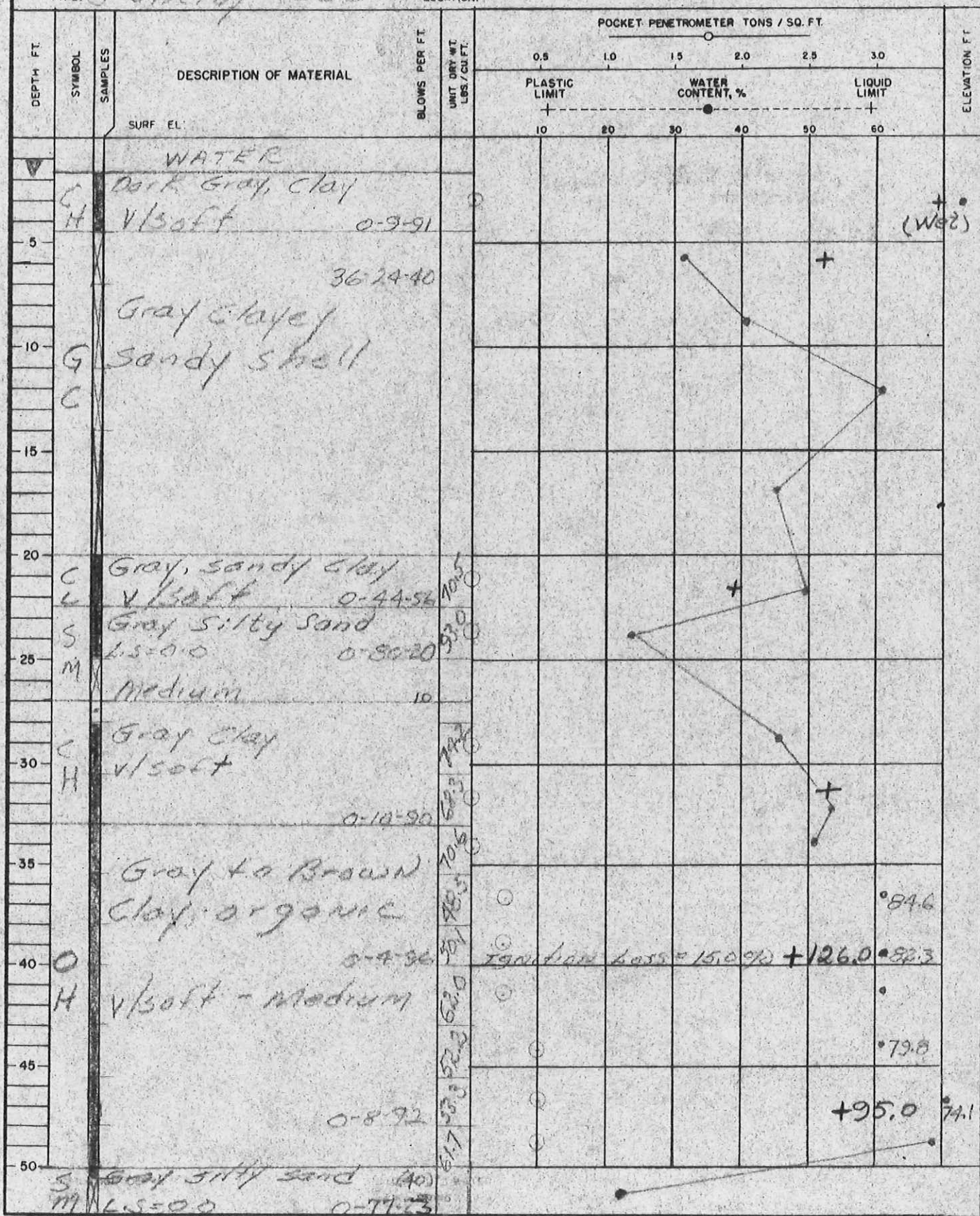


SARINE PASS
ANCHORAGE BASIN

LOG OF BORING NO. 35T-2
Tide +1.5 @ 8:30 AM
+1.6 @ 2:10 PM

TYPE: 3' Shelby Tube

LOCATION:



DEPARTMENT OF THE ARMY DIVISION <u>Southwestern</u> INSTALLATION <u>Galv Dist, Eng Div</u>			1. PROJECT Sabine Pass, Anchorage Basin		SHEET <u>OF</u>	
DRILLING LOG			2. LOCATION (coordinates or Station) Offset 98' W Tide #1.5 8:30 A		Tide #1.6 2:10 PM	
4. HOLE NO. (As shown on drawing title and file No.) 3ST-8			3. DRILLING AGENCY U. S. Army Corps of Engineers			
6. DIRECTION OF HOLE <input type="checkbox"/> VERTICAL <input type="checkbox"/> INCLINED DEGREES WITH VERTICAL			7. THICKNESS OF OVERBURDEN		8. DEPTH DRILLED INTO ROCK	
10. SIZE AND TYPE OF BIT Shelby Tube - 3"			11. DATUM FOR ELEVATION SHOWN (TBM or MSL)		12. MANUFACTURER'S DESIGNATION OF DRILL	
13. TOTAL NO. OF OVERBURDEN SAMPLES TAKEN DISTURBED 6 Jars UNDISTURBED 12 Cont			14. TOTAL NO. CORE BOXES		15. ELEV. GROUND WATER	
17. ELEV. TOP OF HOLE			18. TOTAL CORE RECOVERY FOR BORING (%)		19. SIGNATURE OF INSPECTOR	
ELEVATION	DEPTH	LEGEND	CLASSIFICATION OF MATERIALS (Description)	% CORE RECOVERY	BOX OR SAMPLE NO.	REMARKS (drilling time, water loss, depth of weathering, etc., if significant)
0.0	1.8		Water			
1.8	4.5		Dark gray sandy clay, v/soft			Cont. 1
4.5	7.0		Gray sandy clay w/large shell			Jar 1
7.0	11.0		Gray sandy clay shell			Jar 2
11.0	14.0		Gray sandy clay shell			Jar 3
14.0	20.0		Gray sandy clay w/shell No resistance 5' rod, 10 rod, tube and kelly			Jar 4
20.0	22.5		Gray sandy clay fine shell v/soft			Cont. 2
22.5	25.0		Gray medium clay sand fine broken shell, v/soft			Cont. 3
25.0	27.0		Gray clay sand shell 25.0-25.5 Seat pent 25.5-26.0 3 blows 26.0-26.5 7 blows			Jar 5
27.0	28.0		Same as below			Washed away
28.0	30.5		Gray silty clay small shell v/soft			Cont. 4
30.5	33.0		Gray silty clay fine shell v/soft			Cont. 5
33.0	35.5		Same as above, v/soft			Cont. 6
35.5	38.0		Brown silty clay some shell and rotten wood			Cont. 7 0.25
38.0	40.5		Same as above, soft			Cont. 8 0.25
40.5	43.0		Gray silty clay rotten wood, soft			Cont. 9 0.25
43.0	45.5		Same as above, med			Cont. 10 0.50
45.5	48.0		Brown silty clay w/rotten wood, med			Cont. 11 0.50
48.0	50.5		First 2 feet, same as above Bottom 1/2 foot, gray sand, med			Cont. 12 50.5
50.5	52.5		Gray medium sand Drove 50.5-51.0 Seat pent 51.0-51.5 23 blows 51.5-52.0 17 blows			Jar 6
			Bottomed in above Water 1.8 Weight of hammer 140#			Drop Distance - 30"