

DRILLING LOG		DIVISION Southwestern	INSTALLATION Galv Dist, Eng v		SHEET OF SHEETS	
1. PROJECT Port Aransas Corpus Christi Waterway			10. SIZE AND TYPE OF BIT			
2. LOCATION (Coordinates or Station)			11. DATUM FOR ELEVATION SHOWN (TBM or MSL) Tide #2 @ 6:00 PM			
3. DRILLING AGENCY U. S. Army Corps of Engineers			12. MANUFACTURER'S DESIGNATION OF DRILL			
4. HOLE NO. (As shown on drawing title and file number)		3ST-26	13. TOTAL NO. OF OVER-BURDEN SAMPLES TAKEN		DISTURBED 3 Jars	UNDISTURBED 2 Cont
5. NAME OF DRILLER Eck			14. TOTAL NUMBER CORE BOXES			
6. DIRECTION OF HOLE <input type="checkbox"/> VERTICAL <input type="checkbox"/> INCLINED _____ DEG. FROM VERT.			15. ELEVATION GROUND WATER		16. DATE HOLE STARTED 1 May COMPLETED 1 May 1964	
7. THICKNESS OF OVERBURDEN			17. ELEVATION TOP OF HOLE			
8. DEPTH DRILLED INTO ROCK			18. TOTAL CORE RECOVERY FOR BORING %			
9. TOTAL DEPTH OF HOLE 52.0			19. SIGNATURE OF INSPECTOR			

ELEVATION a	DEPTH b	LEGEND c	CLASSIFICATION OF MATERIALS (Description) d	% CORE RECOV- ERY e	BOX OR SAMPLE NO. f	REMARKS (Drilling time, water loss, depth of weathering, etc., if significant) g
0.0	40.0		Water			
40.0	42.0		Dark gray oily, clay v/soft wet			Jar 1
42.0	44.0		Light tan sandy clay w/small cal nod, v/stiff			Cont. 1 3.5
44.0	46.0		Light tan sandy clay w/cal nod, v/stiff			Cont. 2 3.5
46.0	48.0		No recovery, same as below			
48.0	50.0		Light gray sand, v/fine			Jar 2
50.0	52.0		Light tan v/fine loose sand			Jar 3
			Bottomed The fact that there were no drive tests made has been noted and called to the driller's attention			

Port Aransas
Corpus Christi
Waterway

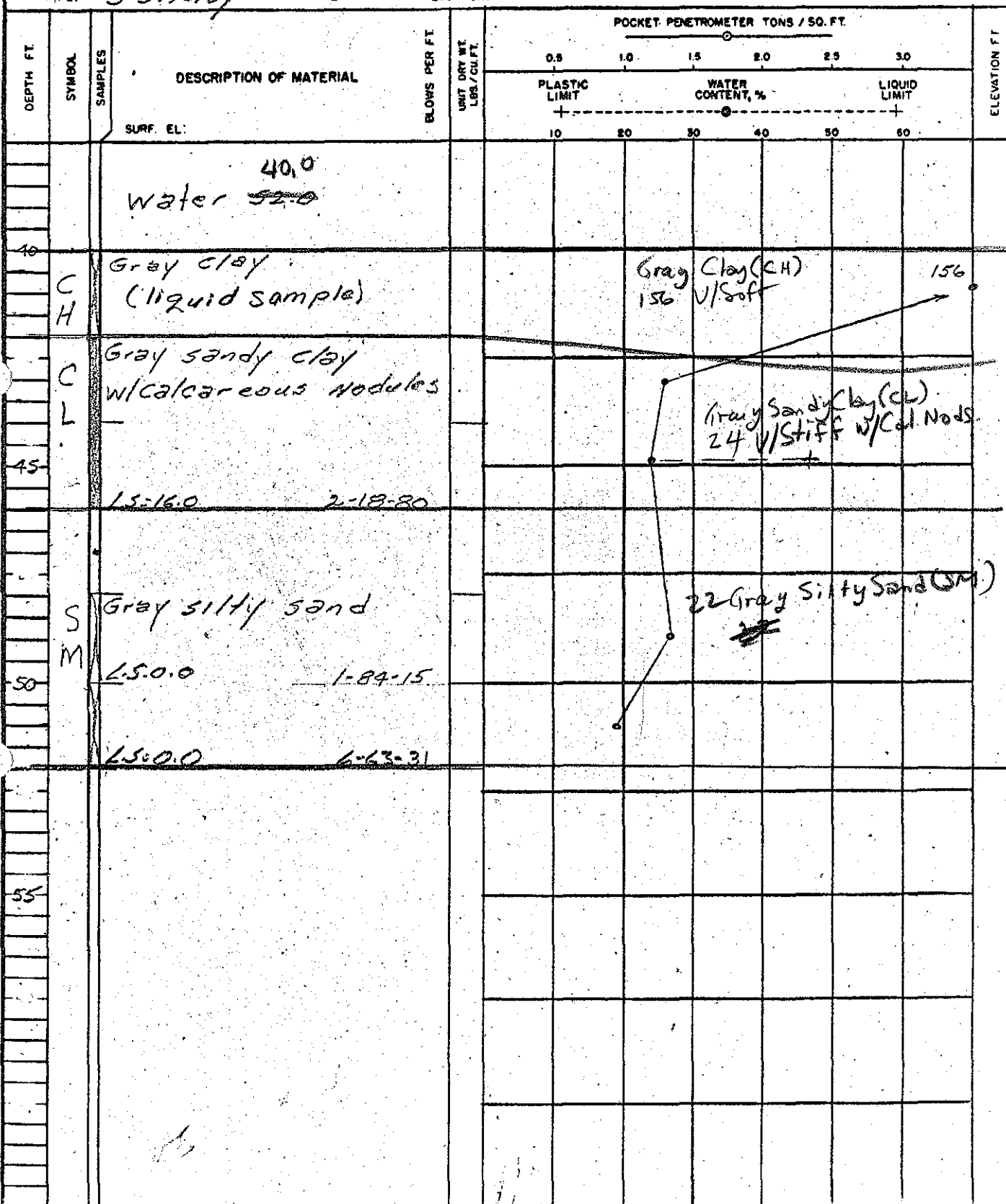
LOG OF BORING NO. 35T-26
Tide #2 @ 6:00 PM

51

TYPE:

3" Shelby Tube

LOCATION:



COMPLETION DEPTH
DATE

DEPTH TO WATER
IN BORING

DATE