

# LOG OF BORING

Project: Bayport Ship Channel Phase 2

Boring No.: 12-60 (Depth of Water = 6.5 feet)

Groundwater during drilling: 0 feet

Groundwater after drilling: ---

Date: 12/1/2012

Northing: 13,792,468.8

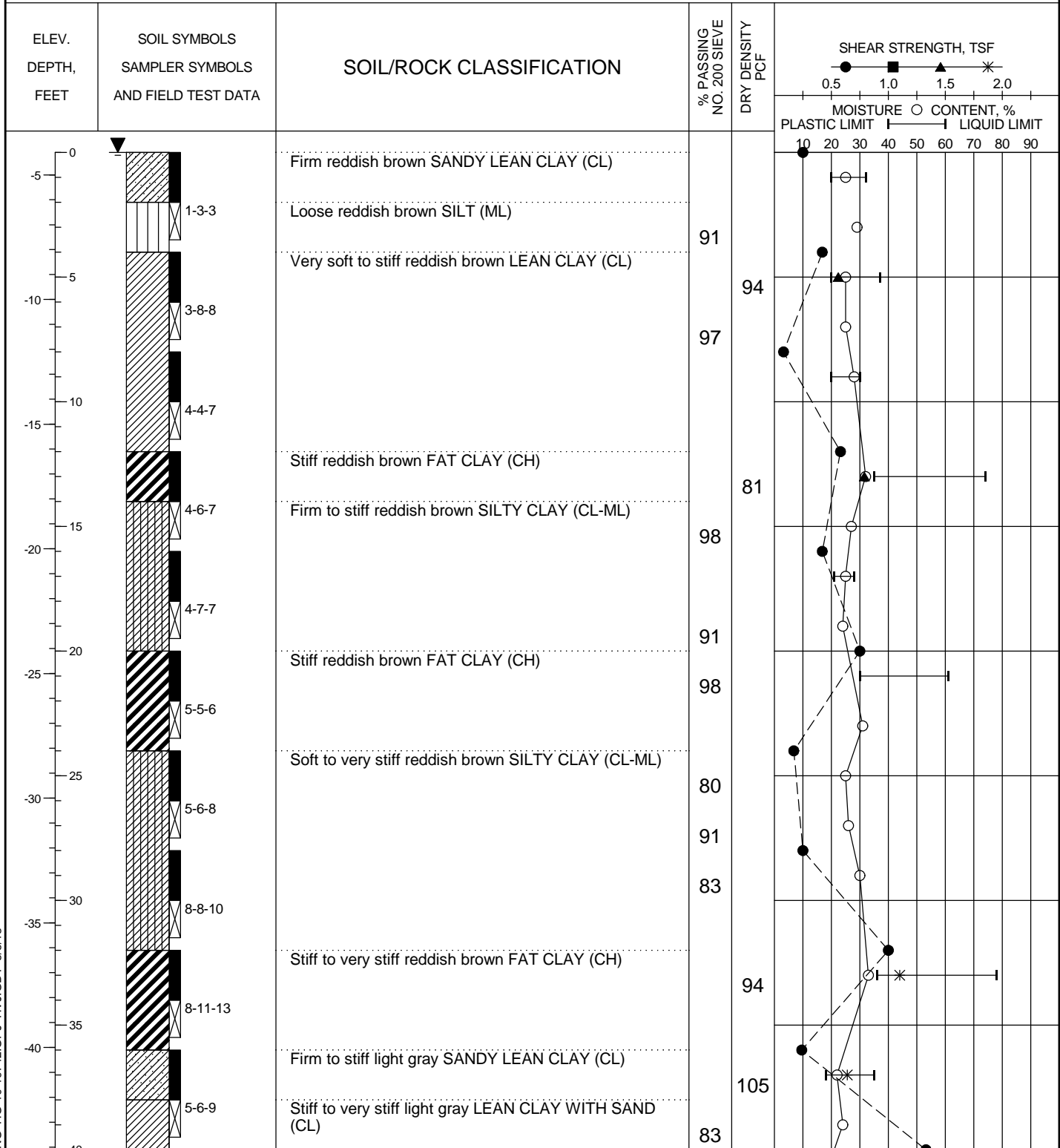
Easting: 3,235,561.0

Project No.: HG1019742

Elevation (MLT): -4.1 feet

Station: 66+13.17

Range: -300.23



Shear Types: ● = Hand Penet. ■ = Torvane ▲ = Unconf. Comp. \* = UU Triaxial

See Plate 2 for boring location.

PLATE A-2a

LOG OF SOIL BORING HG-10-19742.GPJ HVJ.GDT 3/5/13

# LOG OF BORING

Project: Bayport Ship Channel Phase 2

Boring No.: 12-60 (Depth of Water = 6.5 feet)

Groundwater during drilling: 0 feet

Groundwater after drilling: ---

Date: 12/1/2012

Northing: 13,792,468.8

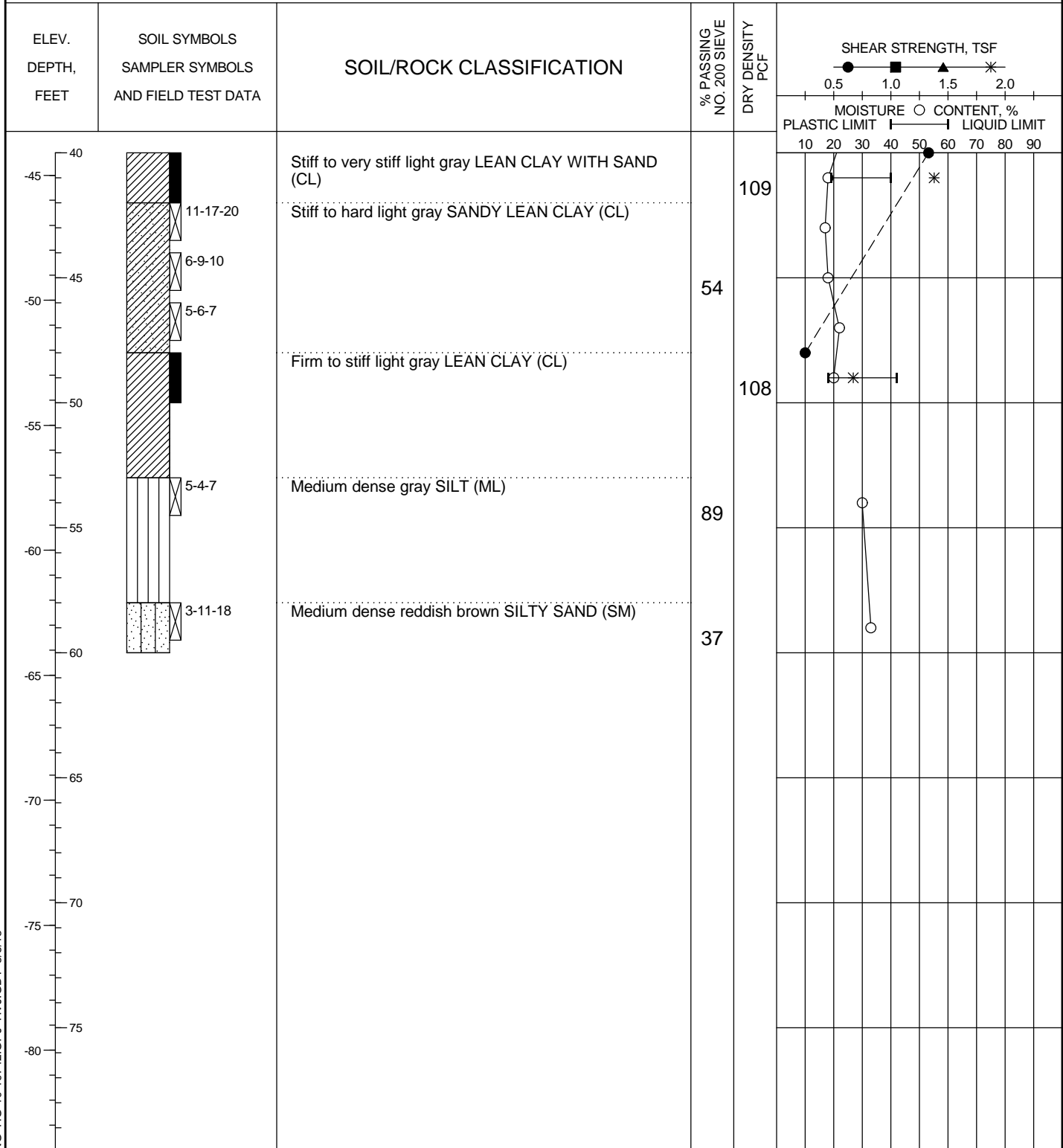
Easting: 3,235,561.0

Project No.: HG1019742

Elevation (MLT): -4.1 feet

Station: 66+13.17

Range: -300.23



Shear Types: ● = Hand Penet. ■ = Torvane ▲ = Unconf. Comp. \* = UU Triaxial

See Plate 2 for boring location.

PLATE A-2b